

INTERIOR DESIGN®

OCTOBER 31
2010

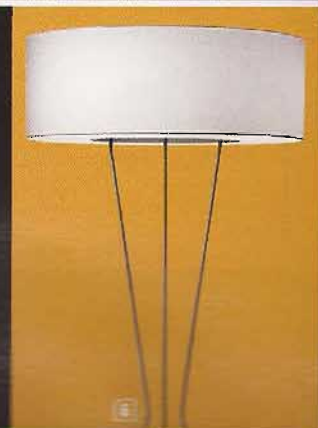
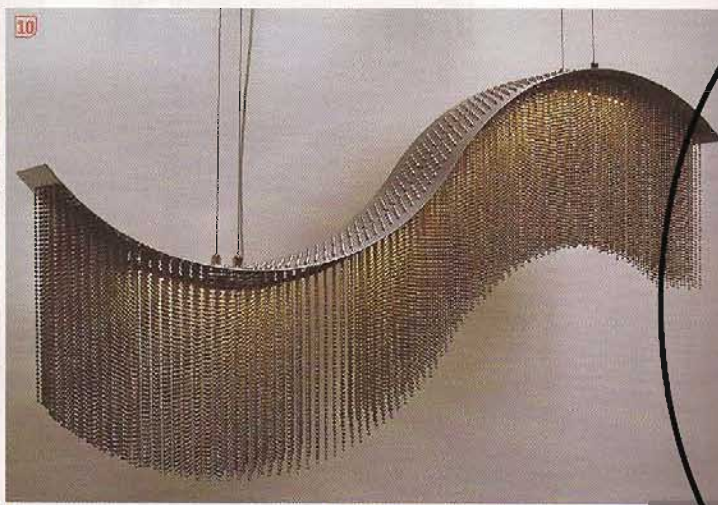
market tabloid
tick tock clocks rock!

ahead of the curve

Sinuous lines define these captivating lamps

lighting

- 1. Piva Marco's Witch suspension light in transparent black blown glass and black painted steel with white painted steel canopy by Leucos. circle 531
- 2. Velle chandelier in hand-brushed aluminum and handblown glass by jGood Design. circle 532
- 3. Hershey floor lamp in bronze with standard patina (shade separate) by Corbin Bronze. circle 533
- 4. Sommerso brass table lamps with Murano glass bases in frosted Tabacco Brown and clear etched by Seguso. circle 534
- 5. Solano chandelier in oil-rubbed steel and handblown glass by Zia Priven. circle 535
- 6. Testa floor lamp in steel with satin glass and cotton shade in white by Estiluz. circle 536
- 7. Valerio Sommella's Trim floor lamp in polyethylene by Euro3Plast. circle 537
- 8. Palmer Hargrave's Macias table lamp in solid brass and rosewood with lampshade in Ivory silk by Dessin Fourmir. circle 538
- 9. Custom Crystal Teardrop chandelier in crystal and satin nickel by Bone Simple Design. circle 539
- 10. Rogue Wave in steel with powdercoated steel ballchains by Dwellings. circle 540



accessories



holdall

Everything in its right—and stylish—place

1. Ramón Esteve's Faz planters in white polyethylene by **Vondom**. circle 648
2. Stella bowl in Murano glass with gold leaf in Fieno by **Seguso**. circle 649
3. Eye quartz ceramics with Swarovski crystal by **Gaia & Gino**. circle 650
4. Lai Chi-Man's Lai #1 ceramic vase in white by **3.Co**. circle 651
5. Front Page magazine holder in red polymethyl methacrylate by **Kartell**. circle 652
6. Bulb Series blown and sandblasted glass vases in White Over Gray and White Over Blue by **Furthurdesign**. circle 653
7. Issi small tumblers in mouthblown crystal by **Teroforma**. circle 654
8. Re-Gift fabric-covered collapsible storage boxes in Lattice/Burnt Scarlet by **Working Class Studio**. circle 655
9. Nina Jobs's Fia in amber and clear glass by **Design House Stockholm**. circle 656 ➔